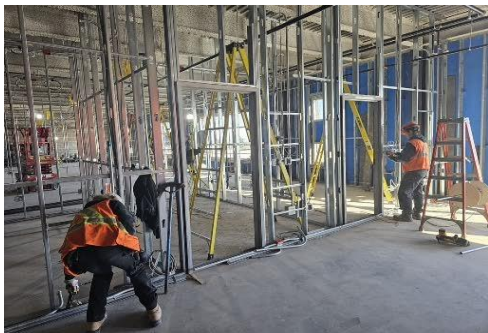


**SPRINGHILL ELEMENTARY SCHOOL
PROJECT STATUS REPORT
January 2024**

New grades PP-6 school project in Springhill to replace the existing West End Memorial and Junction Road elementary schools
Modern learning environment, accommodating 21st Century approaches to learning.
Two storey school featuring learning street with collaborative and hands-on "maker" spaces

General Project Information		Contacts re: concerns or questions	
Project Sponsor Group	NS Dept. of Public Works NS Dept. of Education and Early Childhood Development Central Chignecto Regional Centre for Education	Construction related	Trevor MacNeil, PCL Site Superintendent, During regular business hours at 902-877-6052 or tmacneil@pcl.com
Design Consultant	EXP Architects Inc.	General Project	Ali Mazloum, DPW Project Manager During regular business hours at 902-930-3071 or ali.mazloum@novascotia.ca
General Contractor	PCL Constructors Canada		

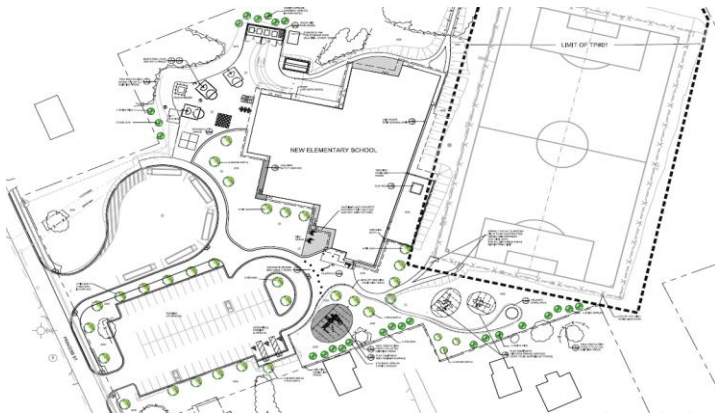
Installation of interior partitions



Rendering of completed building



Project Site Plan



Aerial photo of construction progress end November 2023



2023					2024												
2022-23 SCHOOL YEAR			SUMMER BREAK		2023-24 SCHOOL YEAR											SUMMER BREAK	
Apr	May	Jun	Jul	Aug	Sep	Oct	Nov	Dec	Jan	Feb	Mar	Apr	May	Jun	Jul	Aug	
									CURRENT MONTH								
MAIN BUILDING CONSTRUCTION																	
														Substantial Completion			

PROJECT STATUS
<ul style="list-style-type: none"> - Building is now weather tight. - Installation of interior partitions, mechanical & electrical systems ongoing - Sports field construction complete with full growing season prior to school opening

SAFETY NOTICE
<p>This is an active construction site. No persons are allowed on site without appropriate protective equipment as directed by the PCL construction signage posted at site entrances. If you have an issue that you wish to discuss, please contact the appropriate person as listed above.</p>

PCL Constructors Canada Inc. will make every effort to minimize impacts on neighbours and will follow municipal construction guidelines including traffic control, and noise restrictions.